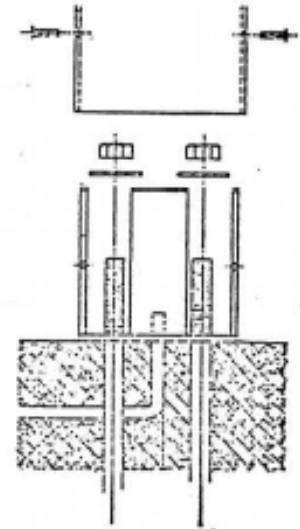


INSTALLATION INSTRUCTIONS BOLLARD LIGHT

**WARNING: DISCONNECT POWER BEFORE INSTALLATION OR SERVICING
READ INSTRUCTIONS CAREFULLY - FAILURE TO DO SO COULD RESULT IN
PERSONAL INJURY. RETAIN INSTRUCTIONS FOR SERVICING.**

FIXTURE INSTALLATION

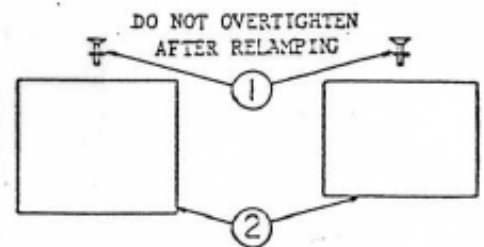
1. UNPACK LUMINAIRE AND CHECK FOR DAMAGE.
2. PLACE BASE OVER ANCHOR BOLTS.
SECURE BASE WITH WASHERS AND NUTS.
3. MAKE WIRING CONNECTIONS.
4. PLACE FIXTURE DOWN OVER BASE, LINING UP
THREADED HOLES IN BASE WITH COUNTERSUNK HOLES
IN FIXTURE HOUSING.



BASE INSTALLATION

BEFORE ENERGIZING MAKE CERTAIN THAT:

- LINE VOLTAGE CORRESPONDS TO BALLAST
- LAMP IS TYPE AND WATTAGE SHOWN ON SERIAL LABEL
NOTE: LAMP MUST HAVE ENVELOPE TYPE A-23
- FOR BEST LAMP CONTACT IN SOCKET, TIGHTEN LAMP,
LOOSEN, THEN RETIGHTEN.



RELAMPING INSTRUCTIONS

1. REMOVE ALLEN SOCKET SCREW AND SEALING
WASHER.
2. REMOVE HOUSING CAP.
3. REMOVE UPPER REFLECTOR AND BRACKET BY
REMOVING #10 WASHER HEAD NUTS.
4. REPLACE LAMP.
5. REVERSE ABOVE PROCEDURE TO RE-ASSEMBLE
FIXTURE BEING SURE SEALING WASHER IS ON SCREW,
NOTE: HEAD OF SCREW WILL NOT BE FLUSH WITH TOP
OF HOUSING DUE TO SEALING WASHER. DO NOT
OVERTIGHTEN TOP ALLEN HEAD SOCKET SCREW.

