

- Lightweight, rugged, one-piece formed and welded aluminum for smooth construction and weather-proofing; Pre-drilled for mounting; Decorative embossed band and reveal colors available
- Electronic ballast for 150w, 250w, 350w and 400w PSMH with 0-10V dimming capability (control system by others); Ballast programmed for automatic dimming also available (consult factory)
- Extruded aluminum doorframe with rigid corner bracing and die-cast zinc latches for tool-free entry; Quality silicone gasketing seals out insects, dirt and moisture; Decorative silk screening conceals electrical compartment; Flat tempered and impact-resistant glass provides sharp full cut-off
- Extruded arms along with multiple adapters provide mounting flexibility
- IDA fixture seal of approval
- Rotatable hydroformed and High Performance segmented reflectors available in IES type II, III, IV and V distributions; H2/H3/H5 (hydroformed), H2P (multifaceted hydroformed); H3P/H4P/H5P (segmented)
- Mogul porcelain socket, pulse-rated, with spring-loaded, nickel-plated center contact and reinforced lamp grip screw shell; Medium base for ED-17 lamp
- 100w - 150w Lag type HPF ballast, starting rated at -20°F (-40°F for HPS)
- 200w - 400w CWA type, HPF ballast, starting rated at -20°F (-40°F for HPS)
- Removable Powr-Panl® available for maintenance and installation ease
- Durable Lektrocote® TGIC thermoset polyester powder coat paint finish assures long life and maintenance-free service
- Listed to UL1598 for use in wet locations

ORDERING INFORMATION

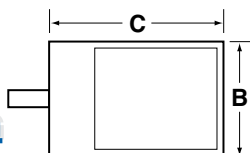
SERIES	SOURCE/WATTAGE	LAMP ORIENT./DISTR.	LENS	COLOR	OPTIONS
RCS Raven Small (100-400w)	ELECTRONIC PULSE START METAL HALIDE E15 150w (ED-28 Mog base) E25 250w (ED-28 Mog base) E35 350w (ED-28 Mog base) E40 400w (ED-28 Mog base)	H2 Horiz. II (hydroformed) H2P Horiz. II High Performance Series (multi-faceted hydroformed) H3 Horiz. III (hydroformed) H3P Horiz. III High Performance Series (segmented) H4 Horiz. IV (multi-piece) H4P Horiz. IV High Performance Series (segmented) with integrated house-side shield H5 Horiz. V (hydroformed) H5P Horiz. V High Performance Series (segmented)	F Flat	DB Dark Bronze BL Black WH White GR Gray PS Platinum Silver RD Red (premium color) FG Forest Green (premium color) CC Custom Color (consult factory)	W(X) Wiring prep (replace X with voltage: 1-120, 2-208, 3-240, 4-277, 5-480, 6-347) RPA2 Round pole adapter (2 3/4-3 1/8") RPA3 Round pole adapter (3 1/4-3 3/4") RPA4 Round pole adapter (3 7/8-4 1/2") RPA5 Round pole adapter (5") RPA6 Round pole adapter (6") F(X) Fusing (replace X with voltage: 1-120, 2-208, 3-240, 4-277, 5-480, 6-347) P(X) Photobutton (replace X with voltage: 1-120, 2-208, 3-240, 4-277) PR(X) Photo cell receptacle (replace X with voltage: 1-120, 2-208, 3-240, 4-277, 5-480, 6-347) QZ Quartz RS with lamp HS ⁴ Internal house-side shield (Except type V distribution) VG Polycarbonate vandal guard RP Power Panel R(XX) Reveal (EB option must be chosen also); Replace XX with color EB Embossed band L Lamp
MOUNT	PULSE START METAL HALIDE P10 100w (ED-17) P12 125w (ED-17) P15 150w (ED-28) P20 200w (T-15) P25 ⁵ 250w (ED-28) P32 320w (ED-28) P35 350w (ED-28) P40 ⁵ 400w (ED-28)	HIGH PRESSURE SODIUM S10 100w (ED-23 1/2) S15 150w (ED-23 1/2) S25 250w (ED-18) S40 400w (ED-18)	VOLTAGE Q ¹ Quad-Tap® 120/208/240/277V 5 480V T ¹ Tri-Tap® 120/277/347V E 50Hz, 220/240V (250 & 400w PSMH & HPS only) V ^{1.5} Five-tap 120/208/240/277/480V 0 No ballast 1 120V (350 & 400w eHID) J 208/240/277V (350 & 400w eHID only) O 120/208/240/277V (150 & 240w eHID only) F 347V		

EASY ORDER FIXTURE AND POLE COMBINATIONS

Catalog Number	Description
RSPC-1-P25-H3-20	20ft, 250w PSMH, Type III
RSPC-1-P40-H3-20	20ft, 400w PSMH, Type III
RSPC-1-P40-H3-25	25ft, 400w PSMH, Type III
RSPC-1-P40-H4-20	20ft, 400w PSMH, Type IV
Twin Configurations	
RSPC-2-P25-H3-20	20ft, 250w PSMH, Type III
RSPC-2-P40-H3-20	20ft, 400w PSMH, Type III
RSPC-2-P40-H3-25	25ft, 400w PSMH, Type III

- 1 Factory wired for highest voltage unless specified
- 2 Required for 90° configurations
- 3 FDMHLH direct mount hardware kit required
- 4 Not needed with H4P optics
- 5 Five-tap ballast available with 250w & 400w PSMH only

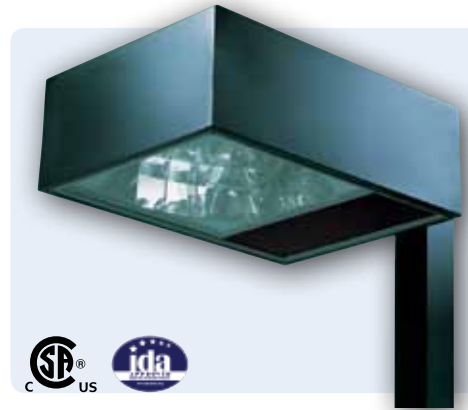
NOTE: All poles to be drilled with #2 pattern SEE PAGE 615 FOR ACCESSORIES



	A	B	C	EPA	Weight
RCS	8 1/2"	16 1/4"	23 1/2"	1.7 ft ²	42 lbs.
	203mm	413mm	591mm	0.2 m ²	19.1 kg

Note: EPA and weight values do not include mounting arm
See Spaulding EPA Value pgs. 622-623 for more detailed information

- Lightweight, rugged, one-piece formed and welded aluminum for smooth construction and weatherproofing; Pre-drilled for mounting; Decorative embossed band and reveal colors available
- Extruded aluminum doorframe with rigid corner bracing and die-cast zinc latches for tool-free entry; Quality silicone gasketing seals out insects, dirt and moisture; Decorative silk screening conceals electrical compartment; Flat tempered and impact-resistant glass provides sharp full cut-off
- Hydroformed and Performance series reflectors available. IES type II, III, IV, and V distributions; H2P/H3P (segmented), H4/H4P (multi-piece), H5 (hydroformed); All reflectors are field rotatable
- Extruded arms along with multiple adapters provide mounting flexibility
- Mogul porcelain socket, pulse-rated, with spring-loaded, nickel-plated center contact and reinforced lamp grip screw shell; Medium base for ED-17 lamp
- CWA type, HPF ballast, starting rated at -20°F (-40°F for HPS)
- Durable Lektrocote® TGIC thermoset polyester powder coat paint finish assures long life and maintenance-free service
- Listed to UL1598 for use in wet locations
- IDA fixture seal of approval

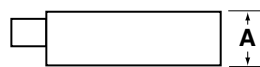
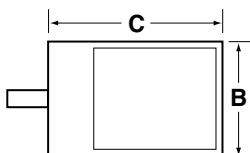


ORDERING INFORMATION

SERIES	SOURCE/WATTAGE	LAMP ORIENT./DISTR.	LENS	COLOR	OPTIONS
RCL Raven Large (400-1000w)	METAL HALIDE H1K 1000w (BT-56) SUPER METAL HALIDE MS1K 1000w (BT-56) PULSE START METAL HALIDE P40 400w (BT-37) P75 750w (BT-37) P1K 1000w (BT-37) HIGH PRESSURE SODIUM S40 400w (ED-18) S60 ³ 600w (T-14) S75 ³ 750w (BT-37) S1K 1000w (E-25)	H2P Horiz. II - Performance series (segmented) H3P Horiz. III - Performance series (segmented) H4 Horiz. IV (multi-piece) H4P Horiz. IV - Performance series (multi-piece) H5 ⁴ Horiz. V - (hydroformed) H5P Horiz. V - (square) segmented	F Flat	DB Dark Bronze BL Black WH White GR Gray PS Platinum Silver RD Red (premium color) FG Forest Green (premium color) CC Custom Color (consult factory)	W(X) Wiring prep (replace X with voltage: 1-120, 2-208, 3-240, 4-277, 5-480, 6-347) RPA2 Round pole adapter (2 3/4-3 1/8") RPA3 Round pole adapter (3 1/4-3 3/4") RPA4 Round pole adapter (37/8-41/2") RPA5 Round pole adapter (5") RPA6 Round pole adapter (6") F(X) Fusing (replace X with voltage: 1-120, 2-208, 3-240, 4-277, 5-480, 6-347) P(X) ⁶ Photobutton (replace X with voltage: 1-120, 2-208, 3-240, 4-277, 5-480, 6-347) PR(X) Photo cell receptacle (replace X with voltage: 1-120, 2-208, 3-240, 4-277, 5-480, 6-347) QZ Quartz RS with lamp HS ⁴ Internal house-side shield VG Polycarbonate vandal guard R(XX) Reveal (EB option must be chosen also); Replace XX with color EB Embossed band L Lamp
MOUNT			VOLTAGE		
A4 Arm mount (includes 4" rigid arm)			Q ¹ Quad-Tap® 120/208/240/277V		
A10 ² Arm mount (includes 10" rigid arm)			5 480V		
WB ⁵ Wall bracket (arm not required nor included)			T ¹ Tri-Tap® 120/277/347V		
WBA4 Wall bracket with 4" rigid arm			E 50Hz 220/240V (400W PSMH & HPS only)		
WBA10 Wall bracket with 10" rigid arm			V ¹ Five-Tap 120/208/240/277/480V		
O No arm or wall bracket (only order without arm or wall bracket when they are ordered as an accessory)			O No Ballast		

- 1 Factory wired for highest voltage unless specified
- 2 Required for 90° configurations
- 3 Must specify Q, 5, or T voltage; Available voltage tap on ballast may vary from catalog; Must specify wiring prep within options
- 4 750w max
- 5 FDMLH direct mount hardware kit required
- 6 400w max; Not available in 480V

**NOTE: All poles to be drilled with #2 pattern
SEE PAGE 615 FOR ACCESSORIES**



	A	B	C	EPA	Weight
RCL	10 1/2"	22 1/4"	30"	2.6 ft ²	70 lbs.
	262mm	556mm	750mm	0.2 m ²	31.7 kg

Note: EPA and weight values do not include mounting arm
See Spaulding EPA Value pgs. 622-623 for more detailed information