

OAKLAND 1 & 2 LPS

Cat. #		Approvals
Job	Type	

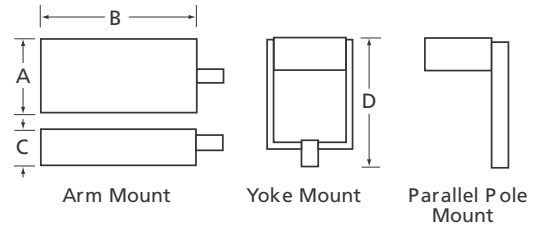
**SPAULDING
LIGHTING**

APPLICATIONS

- Parking areas, office parks, schools, and walkways.

SPECIFICATIONS

- Formed and welded aluminum housing with optional embossed decorative band and color vinyl trim stripe
- Formed aluminum door with clear, flat polycarbonate lens, fully gasketed to housing. Hinged door secured with one captive screw on arm mount luminaire, and two captive screws on yoke, parallel pole and parallel wall mount luminaires
- Prepainted, white aluminum reflectors provide Type IV or V light patterns; IESNA full cut-off classified
- Available with extruded aluminum arm with removable cover plate on bottom side to allow wiring connections in arm; Yoke mount has two square arms attaching housing to square slipfitter for 2.375" OD tenon; Parallel pole mount luminaire flush mounts to pole; Parallel wall mount includes 1" deep mounting bracket
- Lamps and lamp support devices included; Enclosed sockets, with nickel-plated brass contacts for single-ended, bayonet base LPS lamps
- HR type ballasts, HPF, starting rated at -20°F
- Durable Lektrocote® TGIC thermoset polyester powder coat paint finish assures long life and maintenance-free service



	A	B	C	D	EPA (A)	EPA (YT)	Weight (OK1)	Weight (OK2)
L35	15"	24 3/4"	8 1/4"	27 1/2"	1.8 ft²	2.0 ft²	31 lbs	43 lbs
	381 mm	629 mm	210 mm	699 mm	0.2 m²	0.2 m²	14 kg	20 kg
L55	15"	24 3/4"	8 1/4"	27 1/2"	1.8 ft²	2.0 ft²	31 lbs	43 lbs
	381 mm	629 mm	210 mm	699 mm	0.2 m²	0.2 m²	14 kg	20 kg
L90	15"	29"	8 1/4"	27 1/2"	2.1 ft²	2.3 ft²	34 lbs	49 lbs
	381 mm	737 mm	210 mm	699 mm	0.2 m²	0.2 m²	15 kg	22 kg
L13	15"	40"	8 1/4"	27 1/2"	2.9 ft²	3.1 ft²	42 lbs	67 lbs
	381 mm	1016 mm	210 mm	699 mm	0.3 m²	0.3 m²	19 kg	30 kg
L18	15"	53"	8 1/4"	27 1/2"	3.8 ft²	4.0 ft²	45 lbs	70 lbs
	381 mm	1346 mm	210 mm	699 mm	0.4 m²	0.4 m²	20 kg	32 kg

LISTINGS/CERTIFICATIONS

- Listed to UL1598 for use in wet locations



ORDERING INFORMATION

ORDERING EXAMPLE: OK1-PP-L55-H4-F-Q-BL-F1

[] - [] - [] - [] - F - [] - [] - []			
SERIES	LAMP ORIENT./DISTR.	LENS	OPTIONS
OK1 Oakland 1 (Single Lamp) OK2 Oakland 2 (Twin Lamps)	H4 Horiz. IV (OK1 only) YT, PP, PW mounting only H5 Horiz. V (square) A, YT mounting only	F Flat - polycarbonate	F(X) Fusing (replace X with voltage: 1-120, 2-208, 3-240, 4-277, 5-480, 6-347) PR(X) Photo cell receptacle (replace X with voltage: 1-120, 2-208, 3-240, 4-277, 5-480, 6-347) R(XX) Reveal (replace XX with color designation); EB option must be chosen with reveal option EB Embossed band
MOUNT		VOLTAGE	
A³ Arm mount (arm not included, order separately) YT Yoke mount (2 3/8" tenon) PP³ Parallel pole mount (square poles only) PW Parallel wall mount (OK1 only)		Q² Quad-Tap® 120/208/240/277V T² Tri-Tap 120/277/347V (CSA) 5 480V	
	SOURCE/WATTAGE¹		COLOR
	LOW PRESSURE SODIUM L35 35w (T-17) L55 55w (T-17) L90 90w (T-21) L13 135w (T-21) L18 180w (T-21)		DB Dark Bronze BL Black WH White GR Gray PS Platinum Silver RD Red (premium color) FG Forest Green (premium color) CC Custom Color (consult factory)

ARM LOGIC³
(order separately)

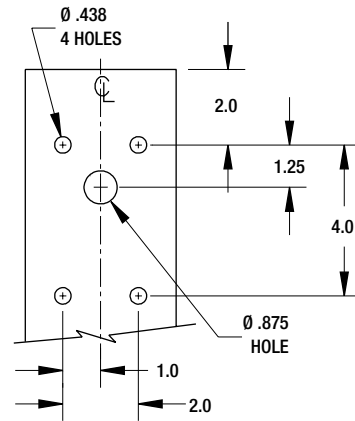
ARM-OLPS-6-S-XX⁴
ARM-OLPS-12-S-XX⁴

1 Lamps and lamp support devices included
 2 Factory wired for highest voltage unless specified
 3 #1 drill pattern for square poles only
 4 For Arms, replace XX with color designation; Arm for square pole only

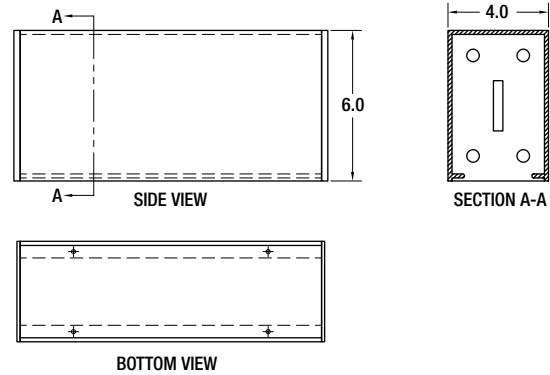
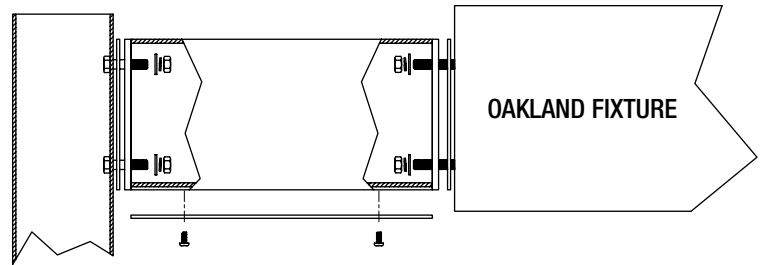
ACCESSORIES

POLE ADAPTERS

ARM-OLPS-6-S-SS	6" arm for square pole only
ARM-OLPS-12-S-X	12" arm for square pole only (required for 90 deg. configurations)
FEA-2-XX	Triangle steel adapt double @ 120 deg.
FEA-3-XX	Triangle steel adapt triple @ 120 deg.
2-SA-SGL-D-XX	Square steel adapt single
2-SA-D90-XX	Square steel adapt-double @ 90 deg.
2-SA-D180-XX	Square steel adapt-double @ 180 deg.
2-SA-TPL-D90-XX	Square steel adapt-triple @ 90 deg.
2-SA-QD-D-XX	Square steel adapt-quad @ 90 deg.
WB-S-XX	Wall Bracket.
PTL-1	(must use PCR (X) option) Photocontrol - Twistlock cell (120V)
PTL-8	(must use PCR (X) option) Photocontrol - Twistlock cell (120, 208, 240, 277V)
PTL-5	(must use PCR (X) option) Photocontrol - Twistlock cell (480V)
PTL-6	(must use PCR (X) option) Photocontrol - Twistlock cell (347V)
PSC	(must use PCR (X) option) Shorting Cap - Twistlock



#1 DRILL PATTERN FOR POLES



Due to our continued efforts to improve our products, product specifications are subject to change without notice.

SPAULDING
LIGHTING

Spaulding Lighting • 701 Millennium Drive • Greenville, SC 29607 • PHONE: 864-678-1000
For more information visit our web site: www.spauldinglighting.com